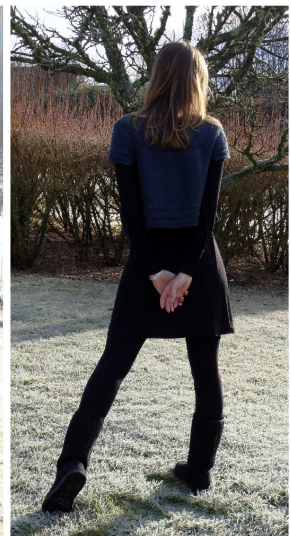


Pima

No sewing cabled cardigan

by Gaëlle Guérin - Knit Spirit



MATERIAL

- needles: US #8
- 3 skeins of Shiny Happy Cotton (Wool And The Gang) color Eagle Grey (yarn characteristics: 100 g by skein, 372 yards, gauge: 4 stitches = 1 inch in stocking stitch, needles: US #8)

ABBREVIATIONS

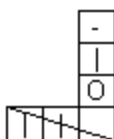
BO: bind off
CO: cast on
k: knit
p: purl
RS: right side

sl: slip
st: stitch
WS: wrong side
yo: yarn over

CHARTS

Chart #1

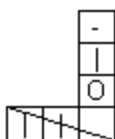
| | | | | | | | | | |
|---|---|---|---|---|---|---|---|---|---|
| | 8 | 6 | 4 | 2 | | | | | |
| 4 | - | - | - | | O | | - | - | |
| | - | - | - | - | | - | - | - | 3 |
| 2 | - | - | - | | | - | - | - | |
| | - | - | - | | | - | - | - | |
| | - | - | - | | | - | - | - | 1 |
| | 9 | 7 | 5 | 3 | 1 | | | | |



p on the RS and k on the WS
k on the RS and p on the WS
yo
sl1, k2 and pass 1st st over

Chart #2

| | | | | | |
|---|---|---|---|---|---|
| | 6 | 4 | 2 | | |
| 4 | - | - | O | - | - |
| | - | - | | - | - |
| 2 | - | - | | | - |
| | - | - | | | - |
| | - | - | | | - |
| | 7 | 5 | 3 | 1 | |



p on the RS and k on the WS
k on the RS and p on the WS
yo
sl1, k2 and pass 1st st over

DIRECTIONS (for a « Small » size)

Left front

CO 64 st.

Row 1 to 6: k64

Row 7: k4, chart #1, k23

Row 8: sl 1, p22, chart #1, k4

Row 9: k4, chart #1, k33

Row 10: sl1, p32, chart #1, k4

Row 11: k4, chart #1, k41

Row 12: sl1, p40, chart #1, k4

Row 13: k4, chart #1, k51

Row 14: k4, p47, chart #1, k4

Row 15 à 30: repeat rows 7 to 14

Row 31: k4, chart #1, k33

Row 32: sl1, p32, chart #1, k4

Row 33: k4, chart #1, k51

Row 34: k4, p47, chart #1, k4

Row 35 à 38: repeat rows 31 and 34

Left sleeve

Row 0: k4, chart #1, k23, don't knit those stitches for the moment. CO 9 st on the left needle (you add those stitches to the existing ones).

From this point work on those 37 st (9 st you just CO + 28 st already existing).

Row 1: k2, chart #2, k28

Row 2: k4, p24, chart #2, k2

Row 3: k2, chart #2, 11 m. end.

Row 4: sl1, p10, chart #2, k2

Row 5: k2, chart #2, k17

Row 6: sl1, p16, chart #2, k2

Row 7: k2, chart #2, k23

Row 8: sl1, p22, chart #2, k2

Row 9 à 48: repeat rows 1 to 8

Row 49: BO 9 st., k28

Row 50: work back on the waiting stitches and knit as follow: k4, p47, chart #1, k4

Back

Row 1 à 92: repeat rows 31 to 34 of the left front

Right sleeve

Row 0: k4, chart #1, k23, don't knit those stitches for the moment. CO 9 st on the left needle (you add those stitches to the existing ones).

From this point work on those 37 st (9 st you just CO + 28 st already existing).

Row 1 à 48: repeat rows 1 to 8 of the left sleeve

Row 49: BO 9 st, k28

Row 50: work back on the waiting stitches and knit as follow: k4, p47, chart #1, k4

Right front

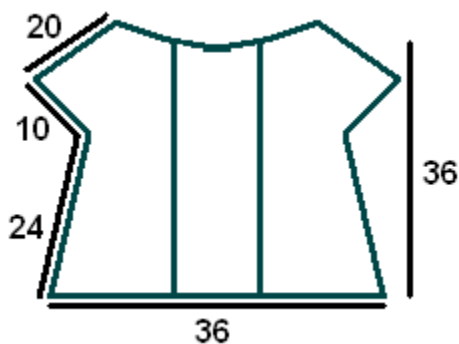
Row 1 à 8: repeat rows 31 to 34 of the left front

Row 9 à 32: repeat rows 7 to 14 of the left front

Row 33 à 38: k64

BO flexibly.

MEASUREMENTS (for a « Small » size)



Measurements are in centimeters.

Pattern and pictures Copyright © 2009 Gaëlle Guérin

www.knitspirit.net

All Rights Reserved.